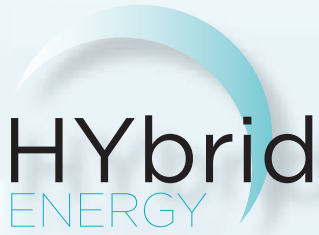


HYbrid Energy Station HES 4 TWINPack

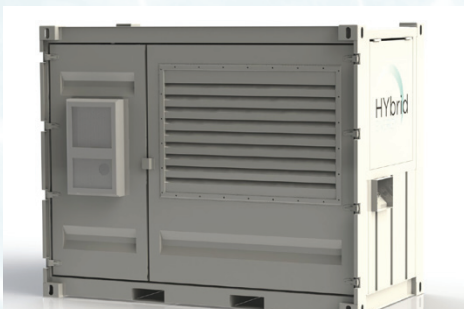
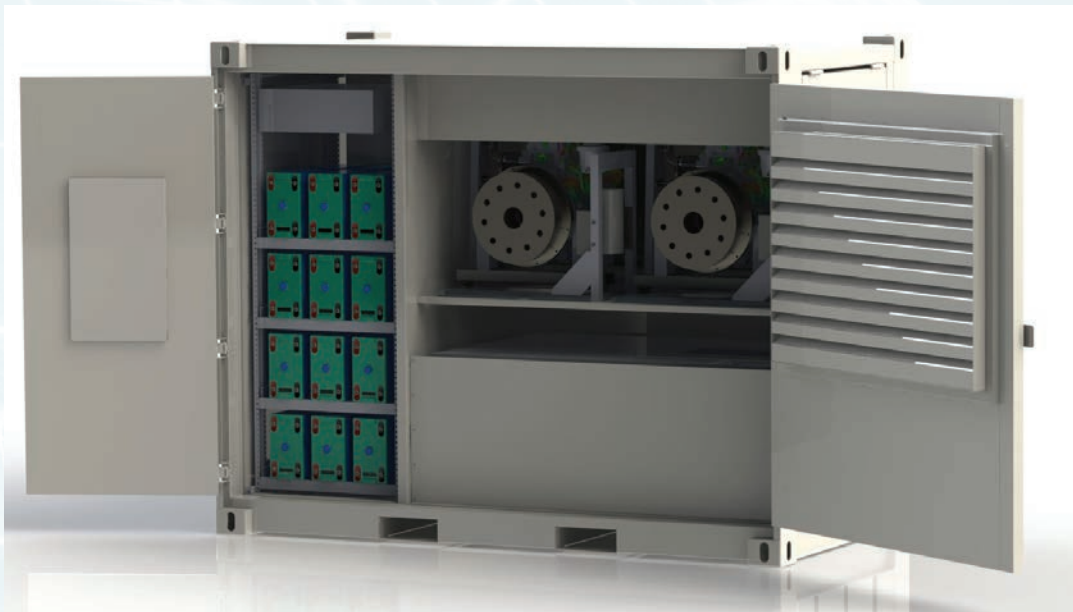


Application:

- Site loads up to 800 A (@48 V DC)
- Recommended load factor is 50% for optimum CapEx / OpEx balance.
- Increased fuel efficiency can be achieved by reducing load factor further
- There is NO MINIMUM LOAD
- Dual redundant power sources in one secure enclosure
- Increased availability
- Large 1600 litre fuel tank

Power Supplies:

- Twin engines
- 2 x 10kW or 2 x 20 kW
- Full redundancy:
 - 2 x controllers
 - 2 x speed governors
 - 2 x fuel pumps
 - 2 x fuel tanks*
 - 2 x exhaust systems
 - 2 x independent sets of filters
 - 2 x power rectifiers



Batteries:

- Lithium Ion*
- Up to 2,000ah capacity
- 2 x redundant battery strings*
- BMS will automatically disconnect a failed string to maintain power to load
- If both strings fail, engines can supply site load

*Indicates optional equipment

